




MAP LABEL	AIDS TO NAVIGATION	PLANE COORDINATES		LATITUDE	LONGITUDE
		X	Y		
INFO SIGN	SIGN (04/22)	950,862	680,162	26°12'07.52"	80°06'04.50"



NOTES:  
 1. REFER TO SURVEY NO. 15-097.  
 2. SEE SHEET NO. 1 FOR SURVEY NOTES.

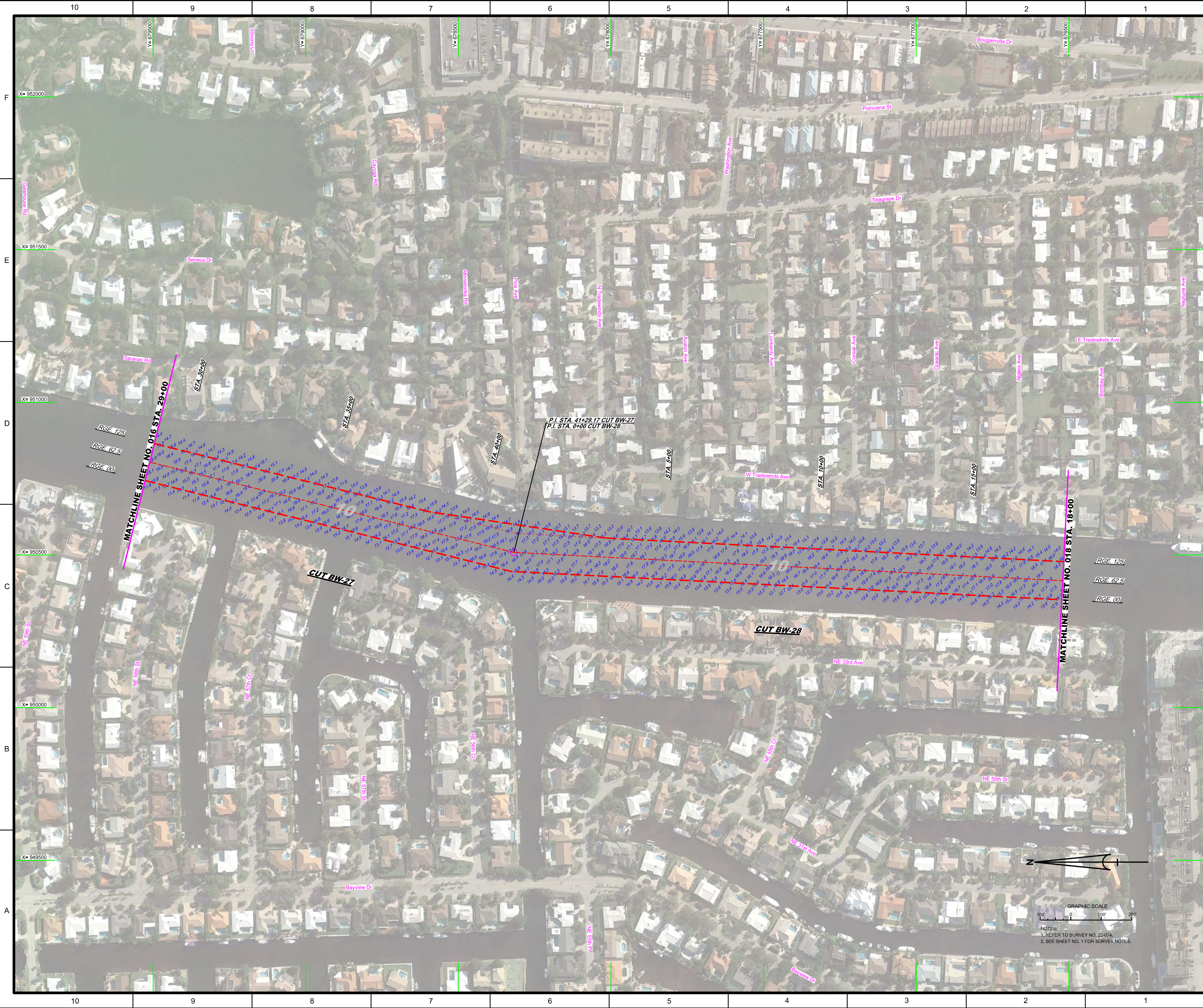
  
 US Army Corps of Engineers  
 Jacksonville District  
 SAFETY ON THIS JOB  
 DEPENDS ON YOU

DEPARTMENT OF THE ARMY  
 JACKSONVILLE DISTRICT, CORPS OF ENGINEERS  
 JACKSONVILLE, FLORIDA

INTRACOASTAL WATERWAY  
 JACKSONVILLE TO MIAMI, FLORIDA  
 BROWARD COUNTY  
**HYDROGRAPHIC EXAM SURVEY FY22**  
**10-FOOT PROJECT**  
 STA. 13+00 CUT BW-26 THRU STA. 29+00 CUT BW-27  
**PLAN**

Scale: AS SHOWN  
 Drawing no.  
**16**  
 SHEET 16 OF 45



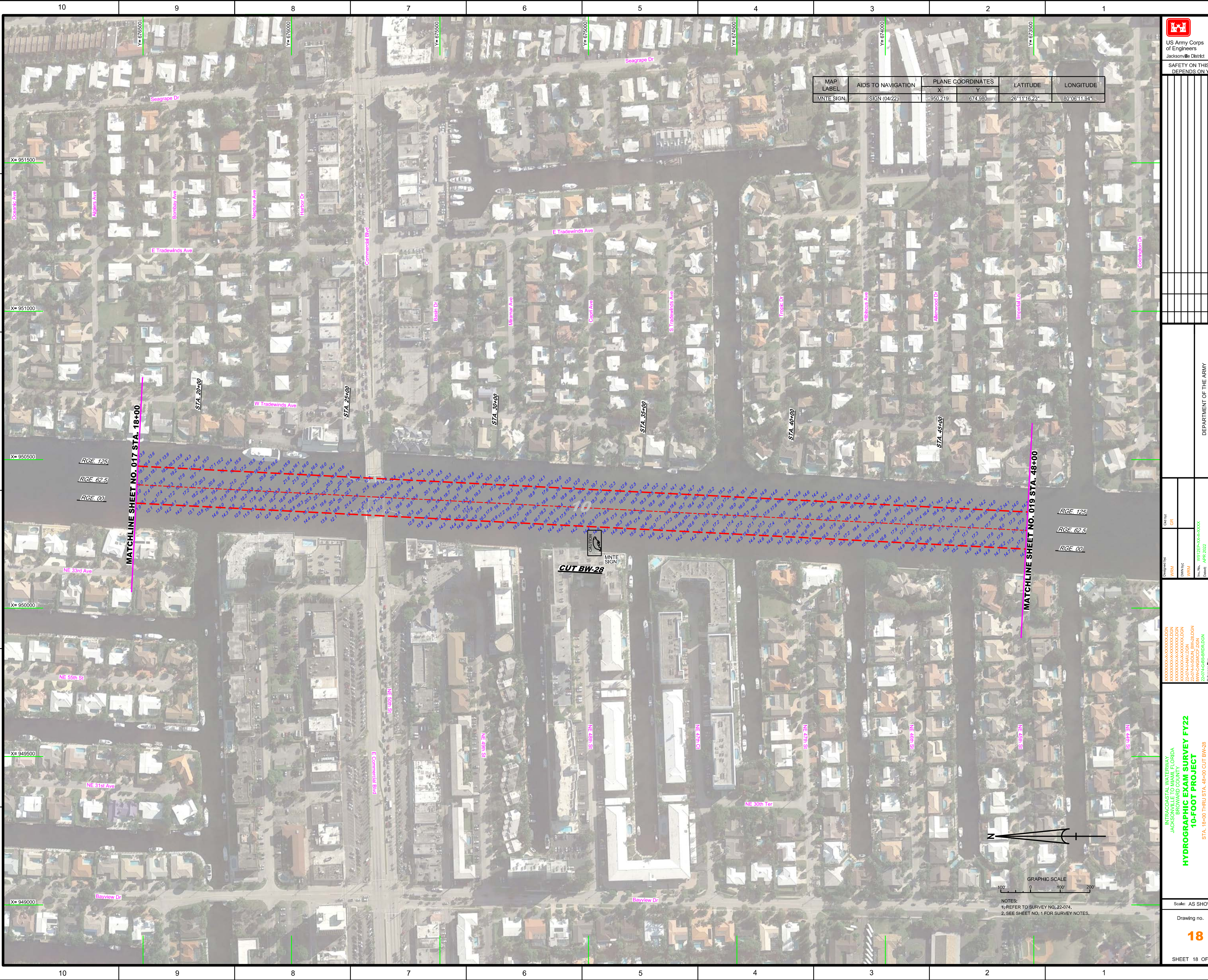


<p>US Army Corps of Engineers Jacksonville District</p>	
<p>SAFETY ON THIS JOB DEPENDS ON YOU</p>	
<p>DESIGNED BY: GR</p>	
<p>CHECKED BY: GR</p>	
<p>DATE: APR 2022</p>	
<p>PROJECT: INTRACOASTAL WATERWAY JACKSONVILLE TO MIAMI, FLORIDA BROWARD COUNTY 10-FOOT PROJECT PLAN</p>	
<p>STATIONING: STA. 29+00 CUT BW-27 THRU STA. 18+00 CUT BW-28</p>	
<p>SCALE: AS SHOWN</p>	
<p>DRAWING NO. 17</p>	
<p>SHEET 17 OF 45</p>	




NOTES:  
1. REFER TO SURVEY NO. 22-074.  
2. SEE SHEET NO. 1 FOR SURVEY NOTES.





MAP LABEL	AIDS TO NAVIGATION	PLANE COORDINATES		LATITUDE	LONGITUDE
		X	Y		
INTE SIGN	SIGN (04/22)	950,219	674,980	28°11'16.23"	80°08'11.94"

  
 US Army Corps of Engineers  
 Jacksonville District  
 SAFETY ON THIS JOB  
 DEPENDS ON YOU

DEPARTMENT OF THE ARMY  
 JACKSONVILLE DISTRICT, CORPS OF ENGINEERS  
 JACKSONVILLE, FLORIDA

**INTRACOASTAL WATERWAY**  
**JACKSONVILLE TO MIAMI, FLORIDA**  
**BROWARD COUNTY**  
**HYDROGRAPHIC EXAM SURVEY FY22**  
**10-FOOT PROJECT**  
 STA. 18+00 THRU STA. 49+00 CUT BW-28  
**PLAN**

Scale: AS SHOWN  
 Drawing no. **18**  
 SHEET 18 OF 45

NOTES:  
 1. REFER TO SURVEY NO. 22-074,  
 2. SEE SHEET NO. 1 FOR SURVEY NOTES.





MATCHLINE SHEET NO. 018 STA. 48+00

MATCHLINE SHEET NO. 020 STA. 25+00

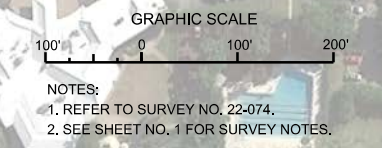
P.I. STA. 53+81.61 CUT BW-28  
P.I. STA. 0+00 CUT BW-29

CUT BW-28

CUT BW-29

RGE. 125  
RGE. 62.5  
RGE. 00

RGE. 125  
RGE. 62.5  
RGE. 00



<p>US Army Corps of Engineers Jacksonville District</p>	
<p>SAFETY ON THIS JOB DEPENDS ON YOU</p>	
<p>DEPARTMENT OF THE ARMY JACKSONVILLE DISTRICT, CORPS OF ENGINEERS JACKSONVILLE, FLORIDA</p>	
<p>Drawn by: GRL</p>	<p>Checked by: GRL</p>
<p>Designed by: WRM</p>	<p>Reviewed by: WRM</p>
<p>Drawn by: WRM</p>	<p>Checked by: WRM</p>
<p>File No: W82255-000-0000</p>	<p>Date: APR 2022</p>
<p>XXXXXXXXXXXXXXXXXXXX.DGN XXXXXXXXXXXXXXXXXXXX.DGN XXXXXXXXXXXXXXXXXXXX.DGN 22-074-SUBA_BW-28.DGN 22-074-SUBA_BW-29.DGN WAC-SANACE.DGN 22-074-SUBA_BW-28.DGN 22-074-SUBA_BW-29.DGN</p>	
<p>INTRACOASTAL WATERWAY JACKSONVILLE TO MIAMI, FLORIDA BROWARD COUNTY <b>HYDROGRAPHIC EXAM SURVEY FY22</b> <b>10-FOOT PROJECT</b> STA. 48+00 CUT BW-28 THRU STA. 25+00 CUT BW-29 <b>PLAN</b></p>	
<p>Scale: AS SHOWN</p>	
<p>Drawing no. <b>19</b></p>	
<p>SHEET 19 OF 45</p>	





MATCHLINE SHEET NO. 019 STA. 25+00

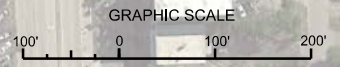
MATCHLINE SHEET NO. 021 STA. 15+00

P.I. STA. 40+19.45 CUT BW-29  
P.I. STA. 0+00 CUT BW-30

RGE 125  
RGE 62.5  
RGE 00

RGE 125  
RGE 62.5  
RGE 00

MAP LABEL	AIDS TO NAVIGATION	PLANE COORDINATES		LATITUDE	LONGITUDE
		X	Y		
NO WAKE	SIGN (0422)	949.975	669.069	26°10'17.71"	80°06'15.07"
NO WAKE	SIGN (0422)	950.221	669.102	26°10'18.02"	80°06'12.37"



NOTES:  
1. REFER TO SURVEY NO. 22-074.  
2. SEE SHEET NO. 1 FOR SURVEY NOTES.

Designed by: GRL  
Checked by: GRL  
Drawn by: GRL  
Scale: AS SHOWN  
Date: APR 2022

INTRACOASTAL WATERWAY  
JACKSONVILLE TO MIAMI, FLORIDA  
BROWARD COUNTY  
**HYDROGRAPHIC EXAM SURVEY FY22**  
**10-FOOT PROJECT**  
STA. 25+00 CUT BW-29 THRU STA. 15+00 CUT BW-30  
**PLAN**



MAP LABEL	AIDS TO NAVIGATION	PLANE COORDINATES		LATITUDE	LONGITUDE
		X	Y		
MNTE SIGN	SIGN (04/22)	949,764	666,098	26°09'48.31"	80°06'17.62"
MNTE SIGN	SIGN (04/22)	950,007	666,062	26°09'47.94"	80°06'14.95"

MATCHLINE SHEET NO. 020 STA. 15+00

MATCHLINE SHEET NO. 022 STA. 45+00

RGE. 125  
RGE. 62.5  
RGE. 00.

RGE. 125  
RGE. 62.5  
RGE. 00.

CUT BW-30

E. Oakland Park Blvd  
Oak Park Access Rd  
NE 32nd Ave  
NE 30th Ave

NE 29th St  
NE 28th St  
NE 27th St  
NE 26th St  
NE 25th St  
NE 24th St  
NE 23rd St

NE 30th St  
NE 30th St  
NE 30th St  
NE 30th St  
NE 30th St  
NE 30th St  
NE 30th St  
NE 30th St  
NE 30th St  
NE 30th St

NE 30th St  
NE 30th St  
NE 30th St  
NE 30th St  
NE 30th St  
NE 30th St  
NE 30th St  
NE 30th St  
NE 30th St  
NE 30th St

CAUTION

CAUTION




NOTES:  
1. REFER TO SURVEY NO. 22-074.  
2. SEE SHEET NO. 1 FOR SURVEY NOTES.

Scale: AS SHOWN

Drawing no. 21

SHEET 21 OF 45



US Army Corps of Engineers  
Jacksonville District

SAFETY ON THIS JOB  
DEPENDS ON YOU

---

XXXXXXXXXXXXXXXXXXXX.DGN  
XXXXXXXXXXXXXXXXXXXX.DGN  
XXXXXXXXXXXXXXXXXXXX.DGN  
22-074-AW.DGN  
WVA-CANACE.DGN  
22-074-GS-BR.DGN  
Reference files  
22-074-HAZ\_LW.DGN

Drawn by: GRL  
Checked by: GRL  
Designed by: WRM  
Drawn by: WRM  
Checked by: WRM  
Date: APR 2022

---

INTRACOASTAL WATERWAY  
JACKSONVILLE TO MIAMI FLORIDA  
BROWARD COUNTY  
**HYDROGRAPHIC EXAM SURVEY FY22**  
**10-FOOT PROJECT**  
STA. 15+00 THRU STA. 45+00 CUT BW-30  
**PLAN**

DEPARTMENT OF THE ARMY  
JACKSONVILLE DISTRICT, CORPS OF ENGINEERS  
JACKSONVILLE, FLORIDA

---

Scale: AS SHOWN

Drawing no. **21**

---

SHEET 21 OF 45

Zone





US Army Corps of Engineers  
Jacksonville District

SAFETY ON THIS JOB  
DEPENDS ON YOU

No.	Symbol	Zone	Date

DEPARTMENT OF THE ARMY  
JACKSONVILLE DISTRICT, CORPS OF ENGINEERS  
JACKSONVILLE, FLORIDA

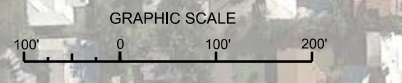
Designed by:	WRM
Checked by:	GR
Drawn by:	WRM
File No.:	22-07-AP-023-BW-034
Client:	APR 2022

INTRACOASTAL WATERWAY  
JACKSONVILLE TO MIAMI, FLORIDA  
BROWARD COUNTY  
**HYDROGRAPHIC EXAM SURVEY FY22**  
**10-FOOT PROJECT**  
STA. 45+00 CUT BW-30 THRU STA. 9+00 CUT BW32  
**PLAN**

Scale: AS SHOWN  
Drawing no.  
**22**  
SHEET 22 OF 45



MAP LABEL	AIDS TO NAVIGATION	PLANE COORDINATES		LATITUDE	LONGITUDE
		X	Y		
MNTE SIGN	SIGN (04/22)	949,543	662,411	26°09'11.81"	80°06'20.32"
MNTE SIGN	SIGN (04/22)	949,265	662,455	26°09'12.26"	80°06'23.37"



NOTES:  
1. REFER TO SURVEY NO. 22-074.  
2. SEE SHEET NO. 1 FOR SURVEY NOTES.

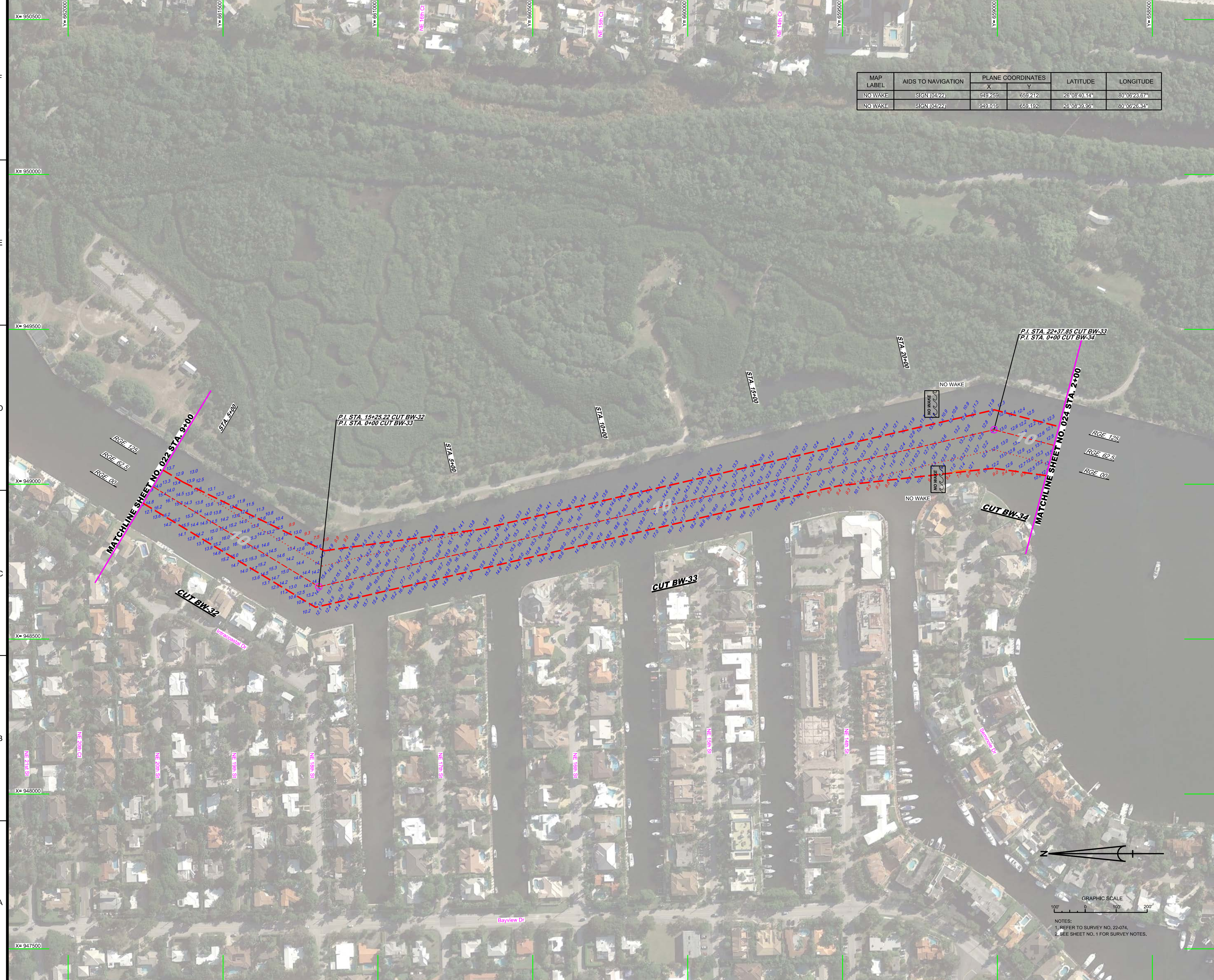


10 9 8 7 6 5 4 3 2 1



US Army Corps of Engineers  
Jacksonville District  
SAFETY ON THIS JOB  
DEPENDS ON YOU

MAP LABEL	AIDS TO NAVIGATION	PLANE COORDINATES		LATITUDE	LONGITUDE
		X	Y		
NO WAKE	SIGN (04/22)	949,259	659,212	26°08'40.14"	80°06'23.67"
NO WAKE	SIGN (04/22)	949,016	659,192	26°08'39.96"	80°06'26.34"



F  
E  
D  
C  
B  
A

F  
E  
D  
C  
B  
A

No.	Symbol	Zone

DEPARTMENT OF THE ARMY  
JACKSONVILLE DISTRICT, CORPS OF ENGINEERS  
JACKSONVILLE, FLORIDA

Check By: GMR  
 Designed By: WRM  
 Drawn By: WRM  
 File No: W12355-A4-A-004  
 Date: APR 2022  
 Reference File: 22-074-HAZEL\_BW.DGN  
 Plot Name:

INTRACOASTAL WATERWAY  
 JACKSONVILLE TO MIAMI, FLORIDA  
 BROWARD COUNTY  
 HYDROGRAPHIC EXAM SURVEY FY22  
 10-FOOT PROJECT  
 STA. 9+00 CUT BW-32 THRU STA. 2+00 CUT BW-34  
 PLAN

Scale: AS SHOWN  
 Drawing no.  
**23**  
 SHEET 23 OF 45

GRAPHIC SCALE  
 0 100' 200'  
 NOTES:  
 1. REFER TO SURVEY NO. 22-074.  
 2. SEE SHEET NO. 1 FOR SURVEY NOTES.



MAP LABEL	AIDS TO NAVIGATION	PLANE COORDINATES		LATITUDE	LONGITUDE
		X	Y		
NO WAKE	SIGN (04/22)	949076	658159	26°08'29.72"	80°06'25.76"

**US Army Corps of Engineers**  
Jacksonville District  
SAFETY ON THIS JOB DEPENDS ON YOU

---

DEPARTMENT OF THE ARMY  
JACKSONVILLE DISTRICT, CORPS OF ENGINEERS  
JACKSONVILLE, FLORIDA

---

Designed by: WRM  
Drawn by: WRM  
Checked by: WRM  
Date: APR 2022

Call by: GR  
File Name: W020256-00-0004  
Revision: 001

---

XXXXXXXXXXXXXXXXXXXX.DGN  
XXXXXXXXXXXXXXXXXXXX.DGN  
XXXXXXXXXXXXXXXXXXXX.DGN  
23-01-AS-001A\_BW-34.DGN  
23-01-AS-001B\_BW-35.DGN  
23-01-AS-001C\_BW-34.DGN  
23-01-AS-001D\_BW-35.DGN

Reference: MDC  
23-07-AS-001L\_BW.DGN  
23-07-AS-002L\_BW.DGN

---

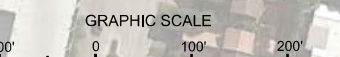
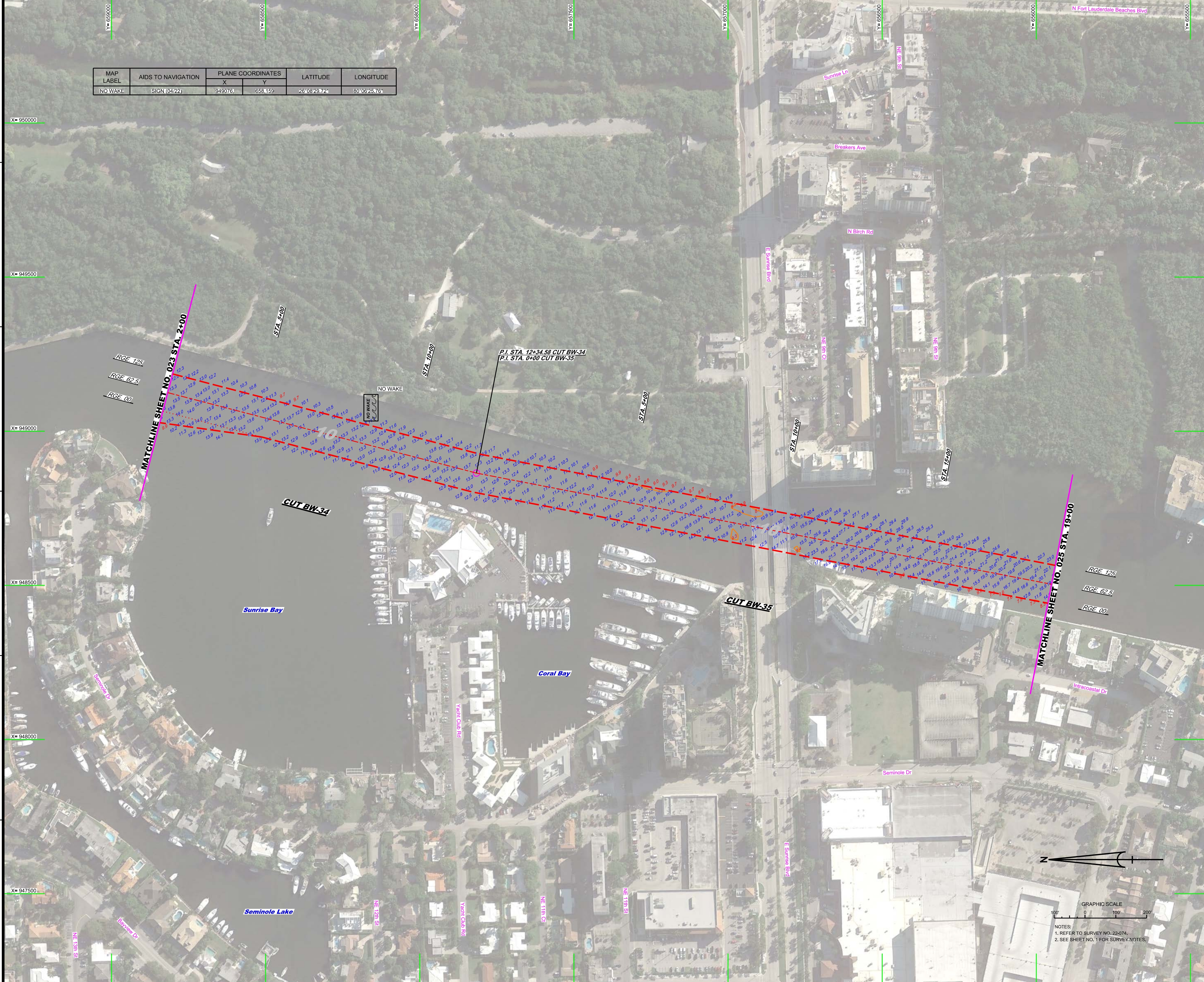
INTRACOASTAL WATERWAY  
JACKSONVILLE TO MIAMI, FLORIDA  
BROWARD COUNTY  
**10-FOOT PROJECT**

---

PLAN  
STA. 2+00 CUT BW-34 THRU STA. 19+00 CUT BW-35

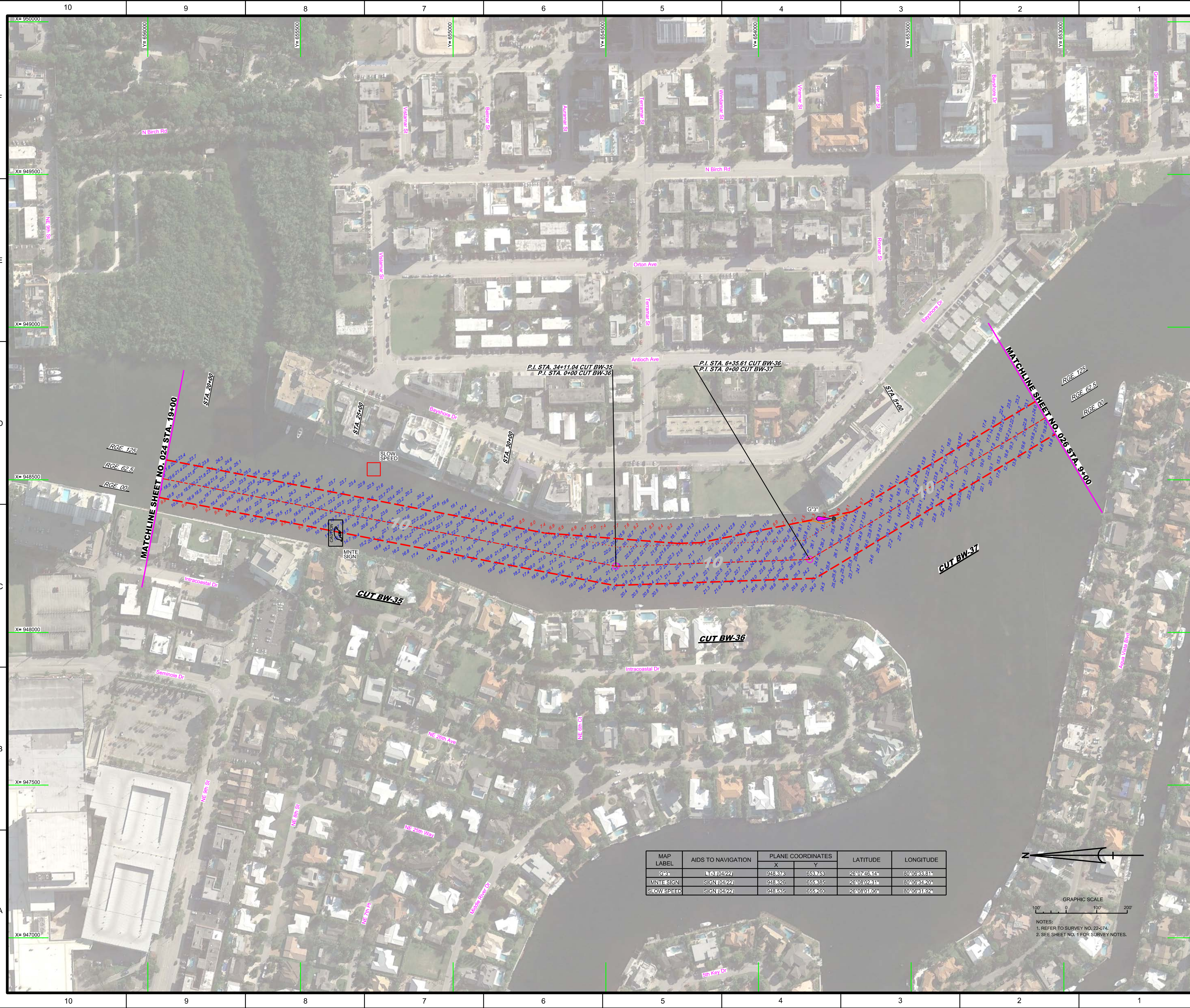
---

Scale: AS SHOWN  
Drawing no. **24**  
SHEET 24 OF 45



NOTES:  
1. REFER TO SURVEY NO. 22-074.  
2. SEE SHEET NO. 1 FOR SURVEY NOTES.





MAP LABEL	AIDS TO NAVIGATION	PLANE COORDINATES		LATITUDE	LONGITUDE
		X	Y		
G3"	LS (04/22)	948376	655753	26°07'46.14"	80°09'33.61"
MUTE SIGN	SIGN (04/22)	948326	655385	26°08'02.63"	80°09'54.20"
SLOW SPEED	SIGN (04/22)	948655	655260	26°08'01.06"	80°09'31.92"




NOTES:  
 1. REFER TO SURVEY NO. 22-074.  
 2. SEE SHEET NO. 1 FOR SURVEY NOTES.





MAP LABEL	AIDS TO NAVIGATION	PLANE COORDINATES		LATITUDE	LONGITUDE
		X	Y		
G-5*	LT-5 (04/22)	949,217	652,573	26°07'34.40"	80°06'24.63"
R-8*	LT-8 (04/22)	948,414	651,166	26°07'20.52"	80°06'33.54"
NO WAKE	SIGN (04/22)	948,744	651,944	26°07'28.20"	80°06'29.88"



US Army Corps of Engineers  
Jacksonville District

**SAFETY ON THIS JOB DEPENDS ON YOU**

---

DEPARTMENT OF THE ARMY  
JACKSONVILLE DISTRICT, CORPS OF ENGINEERS  
JACKSONVILLE, FLORIDA

---

Call by: GRL  
Designed by: WRM  
Drawn by: WRM  
Checked by: WRM  
Date: APR 2022

---

XXXXXXXXXXXXXXXXXXXX  
22-07-AM-001.DGN  
22-07-AM-002.DGN  
22-07-AM-003.DGN  
22-07-AM-004.DGN  
22-07-AM-005.DGN  
22-07-AM-006.DGN  
22-07-AM-007.DGN  
22-07-AM-008.DGN  
22-07-AM-009.DGN  
22-07-AM-010.DGN  
22-07-AM-011.DGN  
22-07-AM-012.DGN  
22-07-AM-013.DGN  
22-07-AM-014.DGN  
22-07-AM-015.DGN  
22-07-AM-016.DGN  
22-07-AM-017.DGN  
22-07-AM-018.DGN  
22-07-AM-019.DGN  
22-07-AM-020.DGN  
22-07-AM-021.DGN  
22-07-AM-022.DGN  
22-07-AM-023.DGN  
22-07-AM-024.DGN  
22-07-AM-025.DGN  
22-07-AM-026.DGN  
22-07-AM-027.DGN  
22-07-AM-028.DGN  
22-07-AM-029.DGN  
22-07-AM-030.DGN  
22-07-AM-031.DGN  
22-07-AM-032.DGN  
22-07-AM-033.DGN  
22-07-AM-034.DGN  
22-07-AM-035.DGN  
22-07-AM-036.DGN  
22-07-AM-037.DGN  
22-07-AM-038.DGN  
22-07-AM-039.DGN  
22-07-AM-040.DGN  
22-07-AM-041.DGN  
22-07-AM-042.DGN  
22-07-AM-043.DGN  
22-07-AM-044.DGN  
22-07-AM-045.DGN  
22-07-AM-046.DGN  
22-07-AM-047.DGN  
22-07-AM-048.DGN  
22-07-AM-049.DGN  
22-07-AM-050.DGN  
22-07-AM-051.DGN  
22-07-AM-052.DGN  
22-07-AM-053.DGN  
22-07-AM-054.DGN  
22-07-AM-055.DGN  
22-07-AM-056.DGN  
22-07-AM-057.DGN  
22-07-AM-058.DGN  
22-07-AM-059.DGN  
22-07-AM-060.DGN  
22-07-AM-061.DGN  
22-07-AM-062.DGN  
22-07-AM-063.DGN  
22-07-AM-064.DGN  
22-07-AM-065.DGN  
22-07-AM-066.DGN  
22-07-AM-067.DGN  
22-07-AM-068.DGN  
22-07-AM-069.DGN  
22-07-AM-070.DGN  
22-07-AM-071.DGN  
22-07-AM-072.DGN  
22-07-AM-073.DGN  
22-07-AM-074.DGN  
22-07-AM-075.DGN  
22-07-AM-076.DGN  
22-07-AM-077.DGN  
22-07-AM-078.DGN  
22-07-AM-079.DGN  
22-07-AM-080.DGN  
22-07-AM-081.DGN  
22-07-AM-082.DGN  
22-07-AM-083.DGN  
22-07-AM-084.DGN  
22-07-AM-085.DGN  
22-07-AM-086.DGN  
22-07-AM-087.DGN  
22-07-AM-088.DGN  
22-07-AM-089.DGN  
22-07-AM-090.DGN  
22-07-AM-091.DGN  
22-07-AM-092.DGN  
22-07-AM-093.DGN  
22-07-AM-094.DGN  
22-07-AM-095.DGN  
22-07-AM-096.DGN  
22-07-AM-097.DGN  
22-07-AM-098.DGN  
22-07-AM-099.DGN  
22-07-AM-100.DGN

---

**INTRACOASTAL WATERWAY  
JACKSONVILLE TO MIAMI, FLORIDA  
BROWARD COUNTY  
HYDROGRAPHIC EXAM SURVEY FY22  
10-FOOT PROJECT**

STA. 9+00 CUT BW-37 THRU STA. 10+00 CUT BW-39  
**PLAN**

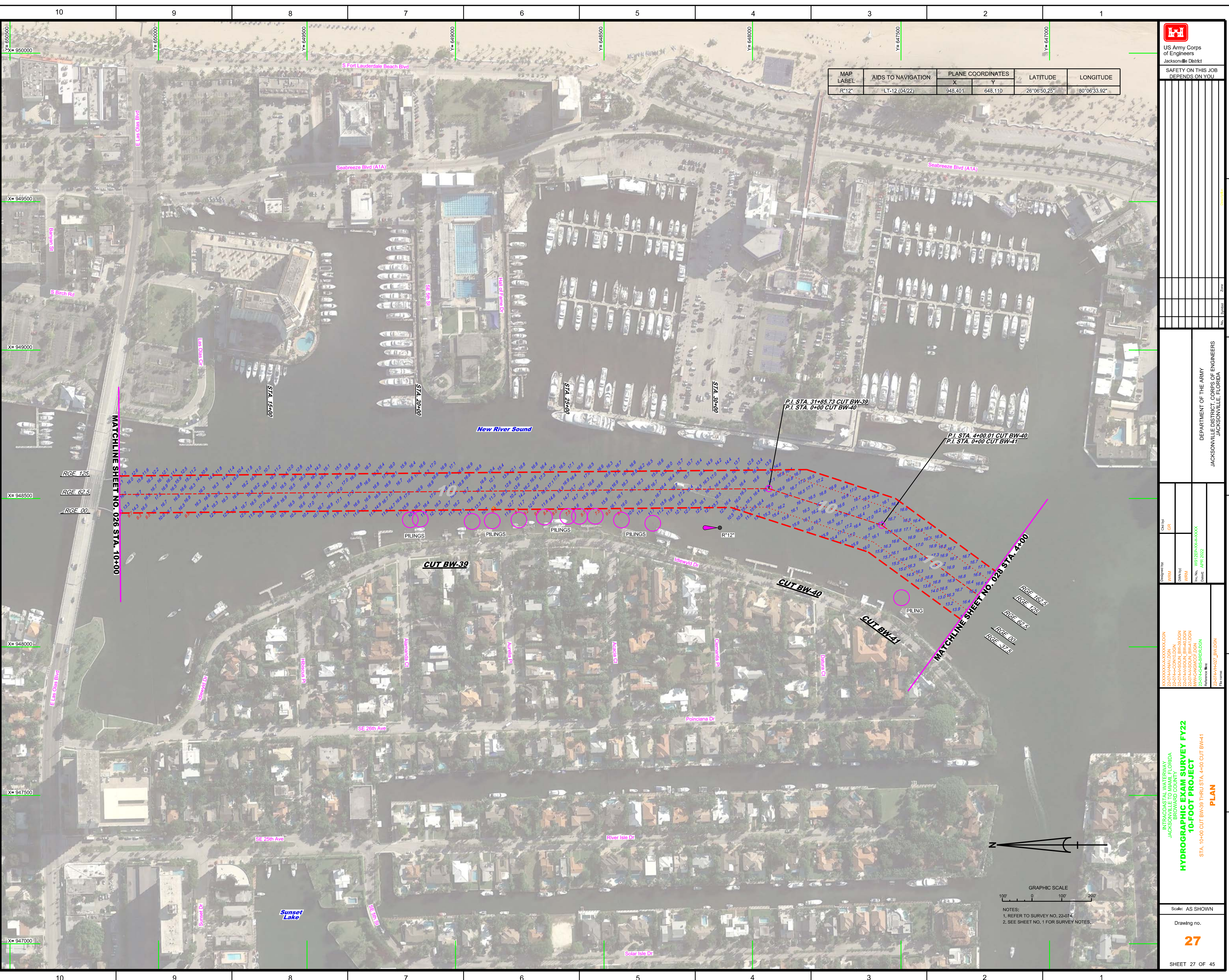
---

Scale: AS SHOWN  
Drawing no. **26**  
SHEET 26 OF 45

GRAPHIC SCALE  
0 100 200

NOTES:  
1. REFER TO SURVEY NO. 22-074.  
2. SEE SHEET NO. 1 FOR SURVEY NOTES.





MAP LABEL	AIDS TO NAVIGATION	PLANE COORDINATES		LATITUDE	LONGITUDE
		X	Y		
R"12"	LT-12 (04/22)	948,401	648,110	26°06'50.26"	80°06'33.92"



US Army Corps of Engineers  
Jacksonville District

SAFETY ON THIS JOB  
DEPENDS ON YOU


DEPARTMENT OF THE ARMY  
JACKSONVILLE DISTRICT, CORPS OF ENGINEERS  
JACKSONVILLE, FLORIDA

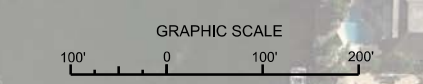
Designed by: WRM  
Checked by: GRL  
Drawn by: WRM  
Scale: AS SHOWN  
Date: APR 2022

XXXXXXXXXXXXXXXXXX  
22-07-AM-HAZL\_BW.DGN  
22-07-AM-ADON  
22-07-AM-ADON  
22-07-AM-ADON  
22-07-AM-ADON  
22-07-AM-ADON  
22-07-AM-ADON  
22-07-AM-ADON  
22-07-AM-ADON

**INTRACOASTAL WATERWAY  
JACKSONVILLE TO MIAMI, FLORIDA  
BROWARD COUNTY  
HYDROGRAPHIC EXAM SURVEY FY22  
10-FOOT PROJECT**

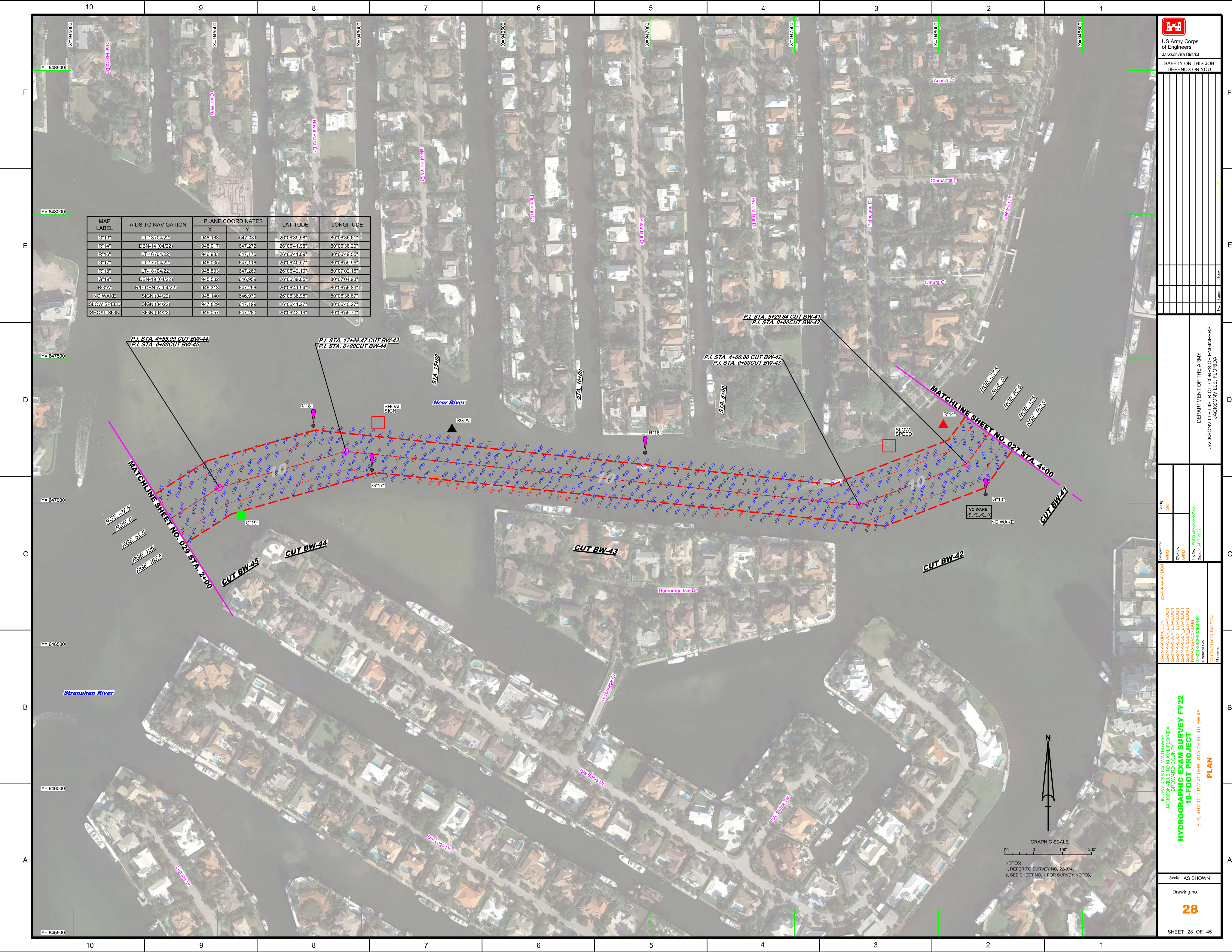
PLAN  
STA. 10+00 CUT BW-39 THRU STA. 4+00 CUT BW-41

Scale: AS SHOWN  
Drawing no. **27**  
SHEET 27 OF 45



- NOTES:  
1. REFER TO SURVEY NO. 22-074;  
2. SEE SHEET NO. 1 FOR SURVEY NOTES.

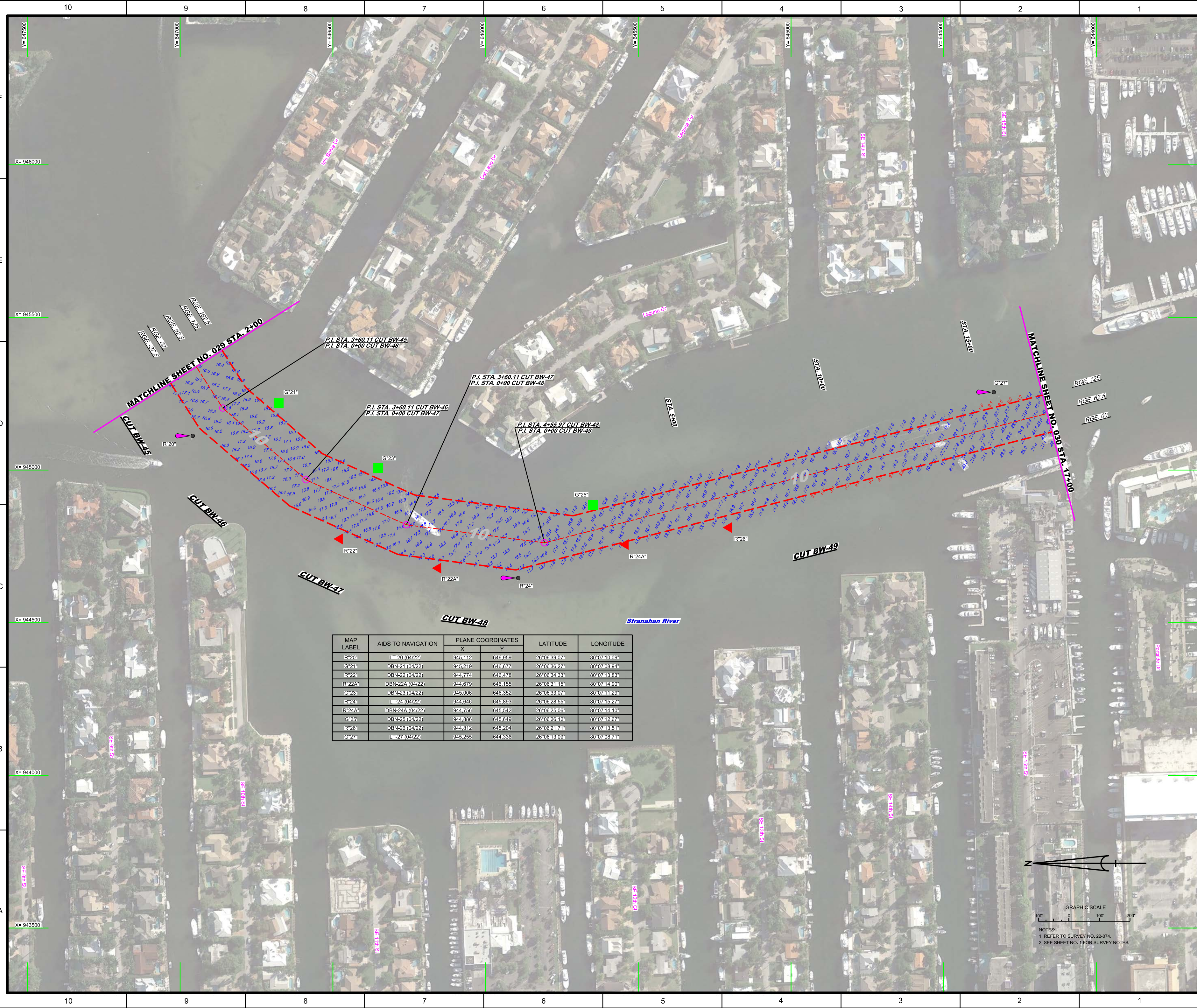




MAP LABEL	AIDS TO NAVIGATION	PLANE COORDINATES		LATITUDE	LONGITUDE
		X	Y		
G413*	L-13 (04/22)	946163	647031	26°06'39.58"	80°06'36.61"
R414*	DBN-14 (04/22)	946017	647272	26°08'41.98"	80°06'38.20"
R416*	L-16 (04/22)	946883	647175	26°08'41.09"	80°06'49.55"
G417*	L-17 (04/22)	946035	647116	26°08'40.57"	80°06'59.95"
R418*	L-18 (04/22)	945833	647269	26°08'42.10"	80°07'02.16"
G419*	DBN-19 (04/22)	945582	646959	26°08'49.05"	80°07'04.93"
RG'A*	RIG DBN-A (04/22)	946818	647255	26°08'41.94"	80°06'58.89"
NO WAKE	SIGN (04/22)	946140	646970	26°08'48.98"	80°06'38.87"
SLOW SPEED	SIGN (04/22)	947329	647199	26°08'41.27"	80°06'40.27"
SHOAL SIGN	SIGN (04/22)	946057	647280	26°08'42.19"	80°06'59.70"

GRAPHIC SCALE  
 0 100' 200'  
 NOTES:  
 1. REFER TO SURVEY NO. 22-074.  
 2. SEE SHEET NO. 1 FOR SURVEY NOTES.



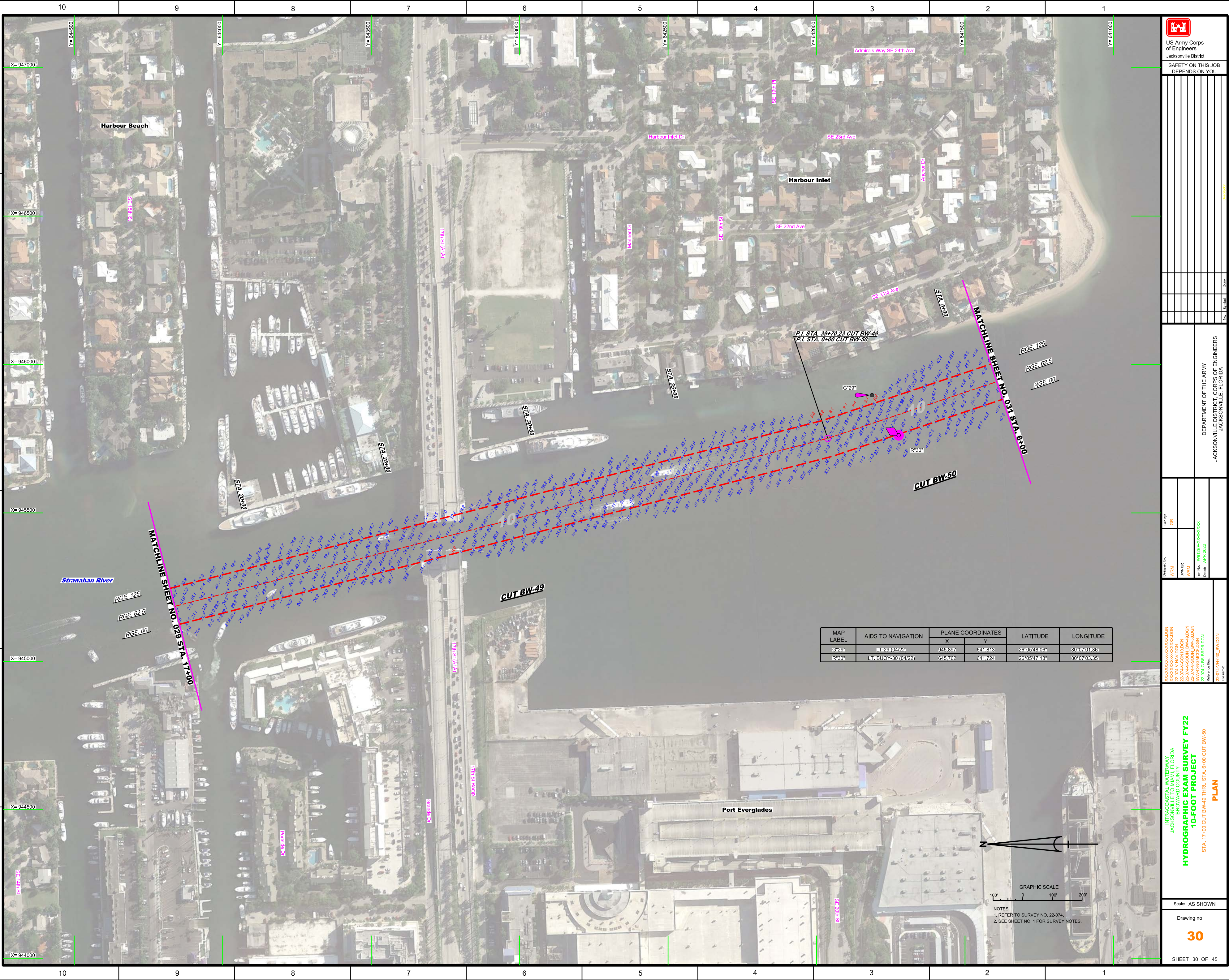


MAP LABEL	AIDS TO NAVIGATION	PLANE COORDINATES		LATITUDE	LONGITUDE
		X	Y		
R*20*	LT=20 (04/22)	945,112	646,959	26°06'39.07"	80°07'10.09"
G*21*	DBN-21 (04/22)	945,219	646,677	26°06'36.27"	80°07'08.94"
R*22*	DBN-22 (04/22)	944,774	646,478	26°06'34.33"	80°07'13.83"
R*22A*	DBN-22A (04/22)	944,679	646,155	26°06'31.15"	80°07'14.90"
G*23*	DBN-23 (04/22)	945,006	646,852	26°06'33.07"	80°07'11.26"
R*24*	LT=24 (04/22)	944,646	645,893	26°06'28.55"	80°07'15.27"
R*24A*	DBN-24A (04/22)	944,756	645,542	26°06'25.06"	80°07'14.10"
G*25*	DBN-25 (04/22)	944,886	645,649	26°06'26.12"	80°07'12.67"
R*26*	DBN-26 (04/22)	944,812	645,204	26°06'21.74"	80°07'13.51"
G*27*	LT=27 (04/22)	945,255	644,336	26°06'18.09"	80°07'08.74"

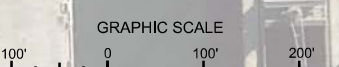


NOTES:  
 1. REFER TO SURVEY NO. 22-074.  
 2. SEE SHEET NO. 1 FOR SURVEY NOTES.






MAP LABEL	AIDS TO NAVIGATION	PLANE COORDINATES		LATITUDE	LONGITUDE
		X	Y		
G*29*	LT 29 (04/22)	945.897	6411813	26°05'48.06"	80°07'01.86"
R*30*	LT BUOY 30 (04/22)	645.762	6411724	26°05'47.18"	80°07'03.35"



NOTES:  
 1. REFER TO SURVEY NO. 22-074.  
 2. SEE SHEET NO. 1 FOR SURVEY NOTES.



US Army Corps of Engineers  
 Jacksonville District  
 SAFETY ON THIS JOB  
 DEPENDS ON YOU

---

DEPARTMENT OF THE ARMY  
 JACKSONVILLE DISTRICT, CORPS OF ENGINEERS  
 JACKSONVILLE, FLORIDA

---

Checked By: GRL  
 Designed By: WRM  
 Drawn By: WRM  
 File No: W12255-A-000-0004  
 Date: APR 2022

---

XXXXXXXXXXXXXXXXXXXX  
 XXXXXXXXXXXXXXXXXXXX  
 XXXXXXXXXXXXXXXXXXXX  
 22-074-A-0001\_BW-49.DGN  
 W12255-A-000-0004  
 22-074-A-0001\_BW-50.DGN  
 W12255-A-000-0004  
 22-074-A-0001\_BW-50.DGN  
 W12255-A-000-0004

---

INTRACOASTAL WATERWAY  
 JACKSONVILLE TO MIAMI, FLORIDA  
 BROWARD COUNTY  
**HYDROGRAPHIC EXAM SURVEY FY22**  
**10-FOOT PROJECT**  
 STA. 17+00 CUT BW-49 THRU STA. 6+00 CUT BW-50  
**PLAN**

---

Scale: AS SHOWN  
 Drawing no.  
**30**  
 SHEET 30 OF 45